

# Test Report

No. SZXEC1902114101

Date: 11 Oct 2019

Page 1 of 6

LIAN JING METAL MATERIAL (HUIZHOU)CO.,LTD

DITANGCUN GROUP,CHENGHAI VILLAGE,CHENJIANG OFFICE OF STREETS,ZHONGKAI HIGH-TECH  
ZONE HUIZHOU  
CHINA

The following sample(s) was/were submitted and identified on behalf of the clients as : Lead-free solder paste

SGS Job No. : RP19-020253 - SZ

Date of Sample Received : 08 Oct 2019

Testing Period : 08 Oct 2019 - 11 Oct 2019

Test Requested : Selected test(s) as requested by client.

Test Method : Please refer to next page(s).

Test Results : Please refer to next page(s).

Conclusion : Based on the performed tests on submitted sample(s), the results of Lead, Mercury, Cadmium, Hexavalent chromium, Polybrominated biphenyls (PBBs), Polybrominated diphenyl ethers (PBDEs) and Phthalates such as Bis(2-ethylhexyl) phthalate (DEHP) , Butyl benzyl phthalate (BBP), Dibutyl phthalate (DBP) , and Diisobutyl phthalate (DIBP) comply with the limits as set by RoHS Directive (EU) 2015/863 amending Annex II to Directive 2011/65/EU.

Signed for and on behalf of  
SGS-CSTC Standards Technical Services Co., Ltd. Shenzhen Branch

Tina

Tina Fan  
Approved Signatory



Unless otherwise agreed in writing, this document is issued by the Company subject to its General Conditions of Service printed overleaf, available on request or accessible at <http://www.sgs.com/en/Terms-and-Conditions.aspx> and, for electronic format documents, subject to Terms and Conditions for Electronic Documents at <http://www.sgs.com/en/Terms-and-Conditions/Terms-e-Documents.aspx>. Attention is drawn to the limitation of liability, indemnification and jurisdiction issues defined therein. Any holder of this document is advised that information contained hereon reflects the Company's findings at the time of its intervention only and within the limits of Client's instructions, if any. The Company's sole responsibility is to its Client and this document does not exonerate parties to a transaction from exercising all their rights and obligations under the transaction documents. This document cannot be reproduced except in full, without prior written approval of the Company. Any unauthorized alteration, forgery or falsification of the content or appearance of this document is unlawful and offenders may be prosecuted to the fullest extent of the law. Unless otherwise stated the results shown in this test report refer only to the sample(s) tested.

Attention: To check the authenticity of testing / inspection report & certificate, please contact us at telephone: (86-755) 8307 1443, or email: [CN.Doccheck@sgs.com](mailto:CN.Doccheck@sgs.com)

SGS Bldg, No.4, Jianghao Industrial Park, No.430, Jihua Road, Bantian, Longgang District, Shenzhen, China 518129 t (86-755) 25328888 f (86-755) 83106190 www.sgsgroup.com.cn  
中国·深圳·龙岗区坂田吉华路430号江源工业园4栋SGS大楼 邮编: 518129 t (86-755) 25328888 f (86-755) 83106190 e [sgs.china@sgs.com](mailto:sgs.china@sgs.com)

## Test Report

No. SZXEC1902114101

Date: 11 Oct 2019

Page 2 of 6

Test Results :

### Test Part Description :

| Specimen No. | SGS Sample ID    | Description |
|--------------|------------------|-------------|
| SN1          | SZX19-021141.001 | Gery paste  |

Remarks :

- (1) 1 mg/kg = 1 ppm = 0.0001%
- (2) MDL = Method Detection Limit
- (3) ND = Not Detected ( < MDL )
- (4) "-" = Not Regulated

### RoHS Directive (EU) 2015/863 amending Annex II to Directive 2011/65/EU

Test Method : With reference to IEC 62321-4:2013+AMD1:2017, IEC62321-5:2013, IEC62321-7-2:2017, IEC 62321-6:2015 and IEC62321-8:2017, analyzed by ICP-OES, UV-Vis and GC-MS.

| Test Item(s)                 | Limit | Unit  | MDL | 001 |
|------------------------------|-------|-------|-----|-----|
| Cadmium (Cd)                 | 100   | mg/kg | 2   | ND  |
| Lead (Pb)                    | 1,000 | mg/kg | 2   | 246 |
| Mercury (Hg)                 | 1,000 | mg/kg | 2   | ND  |
| Hexavalent Chromium (Cr(VI)) | 1,000 | mg/kg | 8   | ND  |
| Sum of PBBs                  | 1,000 | mg/kg | -   | ND  |
| Monobromobiphenyl            | -     | mg/kg | 5   | ND  |
| Dibromobiphenyl              | -     | mg/kg | 5   | ND  |
| Tribromobiphenyl             | -     | mg/kg | 5   | ND  |
| Tetrabromobiphenyl           | -     | mg/kg | 5   | ND  |
| Pentabromobiphenyl           | -     | mg/kg | 5   | ND  |
| Hexabromobiphenyl            | -     | mg/kg | 5   | ND  |
| Heptabromobiphenyl           | -     | mg/kg | 5   | ND  |
| Octabromobiphenyl            | -     | mg/kg | 5   | ND  |
| Nonabromobiphenyl            | -     | mg/kg | 5   | ND  |
| Decabromobiphenyl            | -     | mg/kg | 5   | ND  |
| Sum of PBDEs                 | 1,000 | mg/kg | -   | ND  |
| Monobromodiphenyl ether      | -     | mg/kg | 5   | ND  |
| Dibromodiphenyl ether        | -     | mg/kg | 5   | ND  |
| Tribromodiphenyl ether       | -     | mg/kg | 5   | ND  |
| Tetrabromodiphenyl ether     | -     | mg/kg | 5   | ND  |
| Pentabromodiphenyl ether     | -     | mg/kg | 5   | ND  |



Unless otherwise agreed in writing, this document is issued by the Company subject to its General Conditions of Service printed overleaf, available on request or accessible at <http://www.sgs.com/en/Terms-and-Conditions.aspx> and, for electronic format documents, subject to Terms and Conditions for Electronic Documents at <http://www.sgs.com/en/Terms-and-Conditions/Terms-e-Documents.aspx>. Attention is drawn to the limitation of liability, indemnification and jurisdiction issues defined therein. Any holder of this document is advised that information contained hereon reflects the Company's findings at the time of its intervention only and within the limits of Client's instructions, if any. The Company's sole responsibility is to its Client and this document does not exonerate parties to a transaction from exercising all their rights and obligations under the transaction documents. This document cannot be reproduced except in full, without prior written approval of the Company. Any unauthorized alteration, forgery or falsification of the content or appearance of this document is unlawful and offenders may be prosecuted to the fullest extent of the law. Unless otherwise stated the results shown in this test report refer only to the sample(s) tested.

Attention: To check the authenticity of testing / inspection report & certificate, please contact us at telephone: (86-755) 8307 1443, or email: [CN.Doccheck@sgs.com](mailto:CN.Doccheck@sgs.com)

SGS Bldg, No.4, Jianghao Industrial Park, No.430, Jihua Road, Bantian, Longgang District, Shenzhen, China 518129 t (86-755) 25328888 f (86-755) 83106190 www.sgs.com.cn  
中国·深圳·龙岗区坂田吉华路430号江源工业园4栋SGS大楼 邮编: 518129 t (86-755) 25328888 f (86-755) 83106190 e [sgs.china@sgs.com](mailto:sgs.china@sgs.com)

## Test Report

No. SZXEC1902114101

Date: 11 Oct 2019

Page 3 of 6

| Test Item(s)                       | Limit | Unit  | MDL | 001 |
|------------------------------------|-------|-------|-----|-----|
| Hexabromodiphenyl ether            | -     | mg/kg | 5   | ND  |
| Heptabromodiphenyl ether           | -     | mg/kg | 5   | ND  |
| Octabromodiphenyl ether            | -     | mg/kg | 5   | ND  |
| Nonabromodiphenyl ether            | -     | mg/kg | 5   | ND  |
| Decabromodiphenyl ether            | -     | mg/kg | 5   | ND  |
| Dibutyl Phthalate (DBP)            | 1000  | mg/kg | 50  | ND  |
| Butyl benzyl Phthalate (BBP)       | 1000  | mg/kg | 50  | ND  |
| Bis(2-ethylhexyl) Phthalate (DEHP) | 1000  | mg/kg | 50  | ND  |
| Diisobutyl Phthalate (DIBP)        | 1000  | mg/kg | 50  | ND  |

### Notes :

(1)The maximum permissible limit is quoted from RoHS Directive (EU) 2015/863.

IEC 62321 series is equivalent to EN 62321 series

[https://www.cenelec.eu/dyn/www/f?p=104:30:1742232870351101:::FSP\\_ORG\\_ID,FSP\\_LANG\\_ID:1258637,25](https://www.cenelec.eu/dyn/www/f?p=104:30:1742232870351101:::FSP_ORG_ID,FSP_LANG_ID:1258637,25)

(2) The restriction of DEHP, BBP, DBP and DIBP shall apply to medical devices, including in vitro medical devices, and monitoring and control instruments, including industrial monitoring and control instruments, from 22 July 2021.

(3) The restriction of DEHP, BBP, DBP and DIBP shall not apply to toys which are already subject to the restriction of DEHP, BBP, DBP and DIBP through entry 51 of Annex XVII to Regulation (EC) No 1907/2006.



Unless otherwise agreed in writing, this document is issued by the Company subject to its General Conditions of Service printed overleaf, available on request or accessible at <http://www.sgs.com/en/Terms-and-Conditions.aspx> and, for electronic format documents, subject to Terms and Conditions for Electronic Documents at <http://www.sgs.com/en/Terms-and-Conditions/Terms-e-Documents.aspx>. Attention is drawn to the limitation of liability, indemnification and jurisdiction issues defined therein. Any holder of this document is advised that information contained hereon reflects the Company's findings at the time of its intervention only and within the limits of Client's instructions, if any. The Company's sole responsibility is to its Client and this document does not exonerate parties to a transaction from exercising all their rights and obligations under the transaction documents. This document cannot be reproduced except in full, without prior written approval of the Company. Any unauthorized alteration, forgery or falsification of the content or appearance of this document is unlawful and offenders may be prosecuted to the fullest extent of the law. Unless otherwise stated the results shown in this test report refer only to the sample(s) tested.

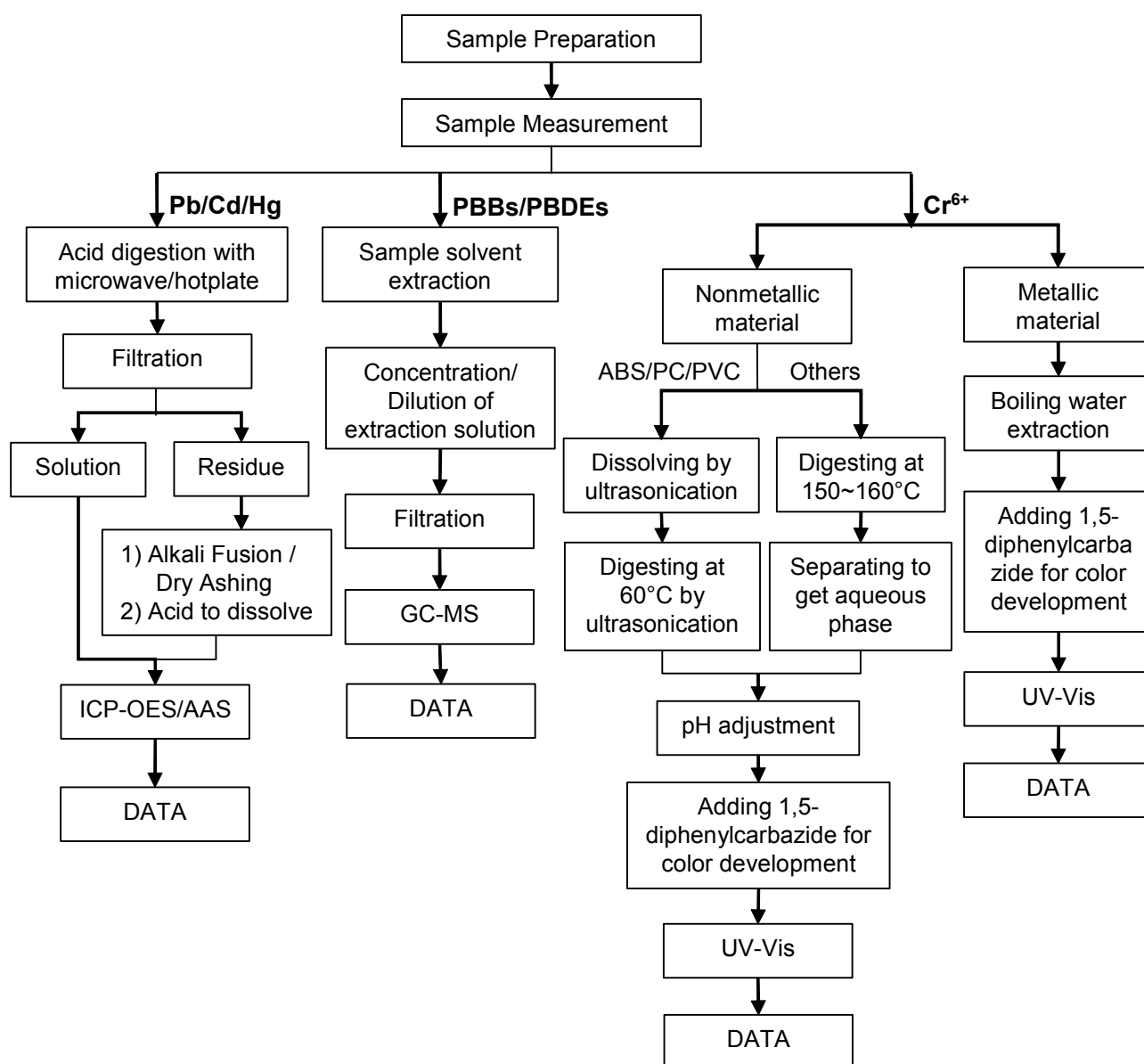
Attention: To check the authenticity of testing / inspection report & certificate, please contact us at telephone: (86-755) 8307 1443, or email: [CN.Doccheck@sgs.com](mailto:CN.Doccheck@sgs.com)

SGS Bldg, No.4, Jianghao Industrial Park, No.430, Jihua Road, Bantian, Longgang District, Shenzhen, China 518129 t (86-755) 25328888 f (86-755) 83106190 www.sgs.com.cn  
中国·深圳·龙岗区坂田吉华路430号江灏工业园4栋SGS大楼 邮编: 518129 t (86-755) 25328888 f (86-755) 83106190 e [sgs.china@sgs.com](mailto:sgs.china@sgs.com)

## ATTACHMENTS

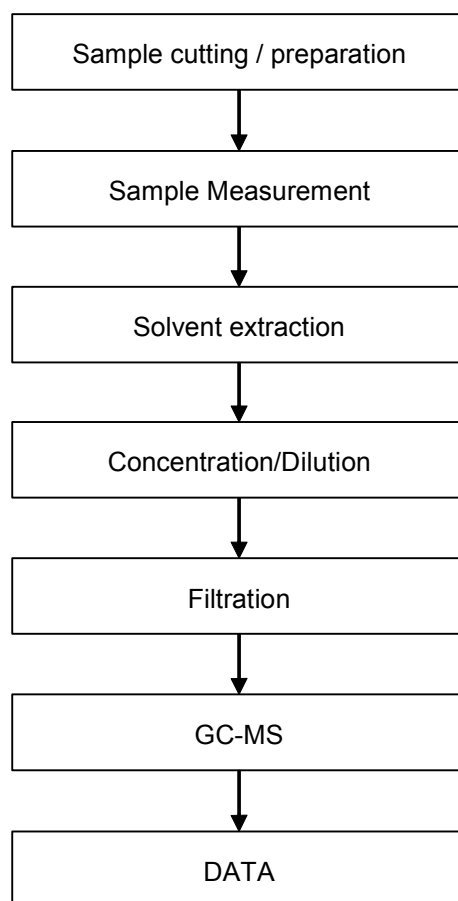
### Pb/Cd/Hg/Cr<sup>6+</sup>/PBBs/PBDEs Testing Flow Chart

1) These samples were dissolved totally by pre-conditioning method according to below flow chart.  
(Cr<sup>6+</sup> and PBBs/PBDEs test method excluded).



## ATTACHMENTS

### Phthalates Testing Flow Chart





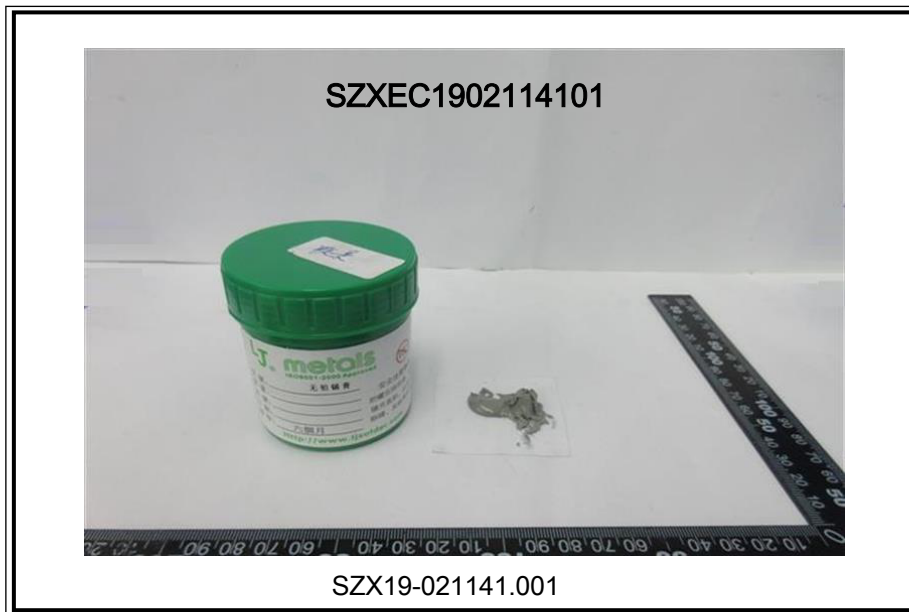
## Test Report

No. SZXEC1902114101

Date: 11 Oct 2019

Page 6 of 6

Sample photo:



SGS authenticate the photo on original report only

\*\*\* End of Report \*\*\*